

agapé uk[†]



Fund Development Director

Who are Agapé UK?

agapé uk†

An Overview

For over 50 years, we've been inspiring people to discover Jesus at home, at work, at university and abroad. As the UK arm of an international Christian charity, active in over 190 countries, we're bringing people together and seeing lives transformed.

Our vision

That every person will have the opportunity to discover Jesus and live their life to the full, in relationship with him.

Our mission

To respond to Jesus's call to invite people to follow him; to learn with them what it means to be his disciples; and inspire, encourage and enable them to invite others to do the same.

What do we do?



At home Agapé UK is strengthening relationships and promoting the importance of community and family life to enhance the emotional and spiritual wellbeing of society. Through our FamilyLife resource and events, we're supporting people around the UK to build flourishing relationships and strong marriages, discovering what it means to have a lasting relationship with Jesus.

At work Agapé UK is equipping people to confidently live and share their faith at work. We're helping the UK's workforce to learn more about their professional strengths and weaknesses, achieve a healthy work life balance, and gain a sense of satisfaction and purpose at work. And, through our network of music professionals, we're sharing our faith through music.

At University Agapé UK has been active on university campuses across the UK for over 50 years, working with students to help them navigate the complexities of student life. Together, we're building student communities where people from all backgrounds can discover more about themselves and explore big questions about life, faith, and God.

Abroad Agapé UK is meeting the needs of people around the world, working with a number of international partners. This includes our humanitarian work with the Global Aid Network (GAIN UK) and the wider activities of Agapé Europe and Cru.

Fund Development Director

Job description



Purpose of the role

Provide leadership to the development of sustainable funding for the national plan by cultivating relationships with trusts & organisations and building a community of ministry partners focused on the fulfilment of the Great Commission.

Responsibilities

Engage with the Executive Leadership Team (ELT) to understand national vision and direction and the funding needs of the ministry.

Develop ongoing communication plans to engage existing and potential ministry partners, trusts & organisations in order to increase relational and financial engagement.

- Develop communication plans and fund proposals that support national priorities and strategic initiatives.
- Develop and maintain effective processes for generating fund development proposals and timely reporting back to partners.
- Maintain and update database of contacts and provide reports as required.

Encourage, inspire and engage a growing community of ministry partners.

- Work with the National Director, ELT and Ministry Leaders to help them engage with major partners for casting vision, relationship building and challenging them to give resources and to engage as LIFE partners (Leadership, Influence, Finances, Expertise).
- Organise ministry partner events to build community, engage with ministry leaders and challenge to give financially to the Great Commission.

Job description

Responsibilities

Grow, lead, and develop a Fund Development team

- Build appropriate team capacity to accomplish the team purpose and objectives.
- Foster a team culture that is collaborative and serves with a posture of helping to solve ministry funding problems.

Maintain a vibrant personal walk with God

- Participate as a member of a local church
- Fully engage with team meetings and Bible study
- Take regular personal retreat days

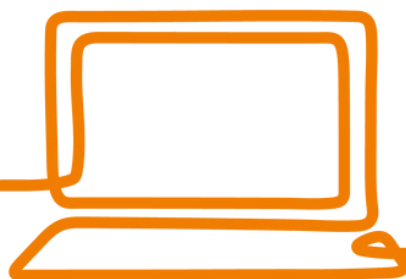


Other activities

- To care for your physical, spiritual, emotional and relational health in order to enable balanced, sustainable ministry for the long term
- Participate fully in Staff Development Cycle
- Ministry Partner Maintenance
- Attend and fulfil responsibilities at staff conferences as required
- Participate in all team meetings and activities
- Perform other work-related duties as assigned

Further information

Location	Birmingham (or alternative location tba)
Hours	40 hours per week (may require some evenings and weekends)
Holiday	25 days plus Bank Holidays
Salary	Funded via personal support
Report to	Central Services Director
Work closely with	Central Team, Communications Lead, ministry heads, Executive Leadership Team



The person Who we are looking for



Person Specifications

- Someone who is servant-hearted and depends on God
- A humble, teachable and ongoing learner
- A proven track record in working collaboratively
- An ability to build a team, develop people and grow culture
- The ability to interact well with ministry leaders and high net worth ministry partners
- A strong spokesperson with proven communication ability
- Excellent written communication
- Experience with trust funding and major donor fund development
- Experience in CRM and database management



Faith

Primarily, we are looking for someone whose first love is Jesus. You have a heart for God and for seeing his great commission fulfilled, and you can articulate the part that God has called you to play in this. You have a desire to continue growing in your relationship with Christ and see working with Agapé UK as part of that. You are already integrated well into your local church community who will be excited to partner with you in this new adventure. You love to see other believers grow in their faith and are looking forward to spiritually investing in the lives of your colleagues.

Character

As a disciple of Christ, you have a teachable spirit and approach this new role, as well as Agapé UK, as a learner. Your servant heartedness is evident to all in the way you eagerly desire to help others. You are known for your high level of integrity and trustworthiness in both your work and personal life. You can identify areas in which you have seen the fruit of the Spirit grow in your life this past year and are aware of areas in which you need to see further growth.

How to apply

What you need to do



If you feel God is leading you to work with Agapé UK in the Fund Development Director role, please contact hr@agape.org.uk to request an application pack or to request further information.

The process

Before applying we recommend you discuss your interest in the role with your church leaders. From our experience, the support and encouragement of your local church is important as you discern God's calling.

Once you have decided to apply, you should complete an application form and send it to the HR Department at:

hr@agape.org.uk

In accordance with Agapé UK's Justifiability and Diversity policies, this post has been identified as having an Occupational Requirement for the successful candidate to be a Christian supporting the aims and ethos of the organisation. Further details available on request.

Jesus came to them and said, "All authority in heaven and on earth has been give to me. Therefore go and make disciples of all nations, baptising them in the name of the Father and of the Son and of the Holy Spirit, and teaching them to obey everything I have commanded you. And surely I am with you always, to the very end of the age."

Matthew 28:18-20